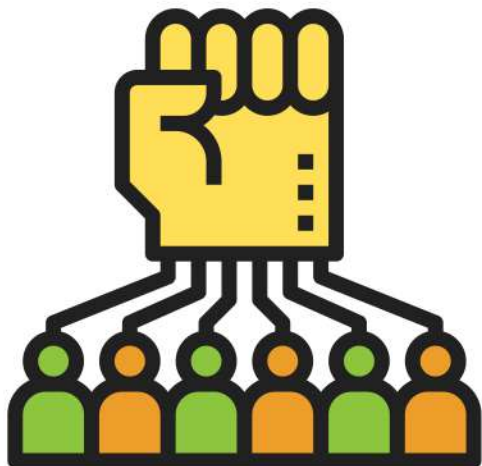


# EQUITY IN THE C-SUITE

## A UNIQUE CHC OFFERING

### OUR PROGRAM

Equity in the C-Suite is a fairness and equity measurement tool that will allow organizations to pragmatically work towards creating conscious workplaces, with social justice as a meter for success. Our promise is to deliver transformational change to organizations looking to engage in equity practices authentically.



### ABOUT US

Community Health Councils, Inc. (CHC) is a non-profit, community-based health education and policy organization, established in 1992, borne out of civil unrest and health crises among communities of color. CHC's mission, Collectively Build Equitable Systems, is realized within our key racial and social justice areas: healthcare, economic resilience and community resilience.

### OUR PARTNERS

In our 30-year history, CHC has partnered with hundreds of non-profit organizations, corporations, colleges/universities, government officials, and community groups in our shared efforts to improve the livelihood of our neighbors in South Los Angeles and beyond. We intend to reengage with our coalition and create new partnerships during the launch of the Equity in the C-Suite program. We hope you consider being among the first in this historic moment.

We thank Cedars Sinai for their financial support and commitment to our efforts. They help make this offering possible.



**Cedars  
Sinai**



**Community  
Health Councils**